

9 mm

Melamine top

Matt and glare-free surface

Top available in dark gray or blue



Weatherproof



Accessible for wheelchair users

Nylon net available

Prepared for ground anchoring



Feet and frames in galvanized steel

Available in different colors

rubberized corner protection



Schools



Parks and gardens



Swimming pools



Companies



Camp sites



Hotel



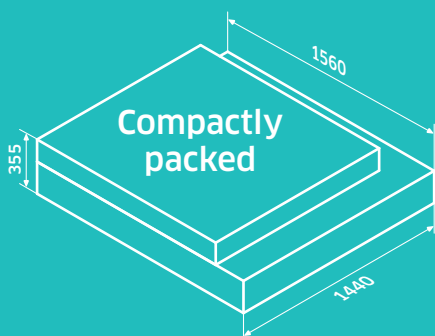
Sports facilities



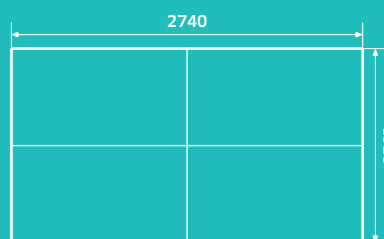
At home

PINGO

OUTDOOR TENNIS TABLE



Compactly packed



Made in the EU



Official tournament mass

140 kg
Net weight



No. 1 in table tennis since 2008



TISCHTENNIS-SHOP.CH



The extremely robust structure is made of galvanized steel and is additionally painted to protect against rust.

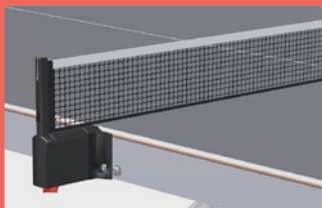


With thge weight of 140 kg (308 lbs), the Pingo is already well protected against theft. The table is prepared for floor anchoring for additional protection.





To protect against injuries, the corners of the weatherproof steel net are rounded. A nylon net is also available on request.



The extra thick, rubberized corner protection protrudes well over the round corner of the table and thus provides additional protection.





The feet attached far outside make the pingo also accessible for wheelchair users

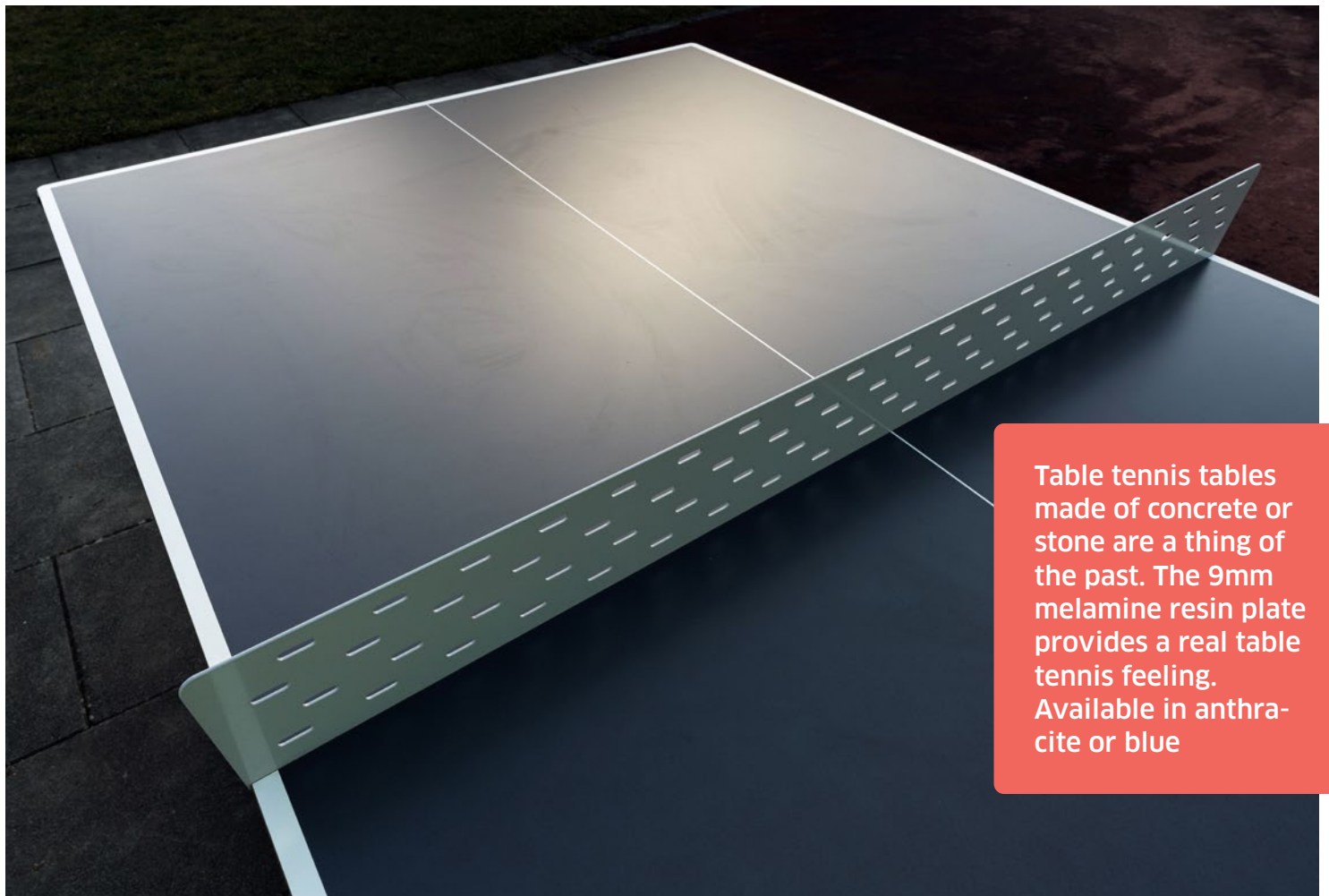


Table tennis tables made of concrete or stone are a thing of the past. The 9mm melamine resin plate provides a real table tennis feeling. Available in anthracite or blue



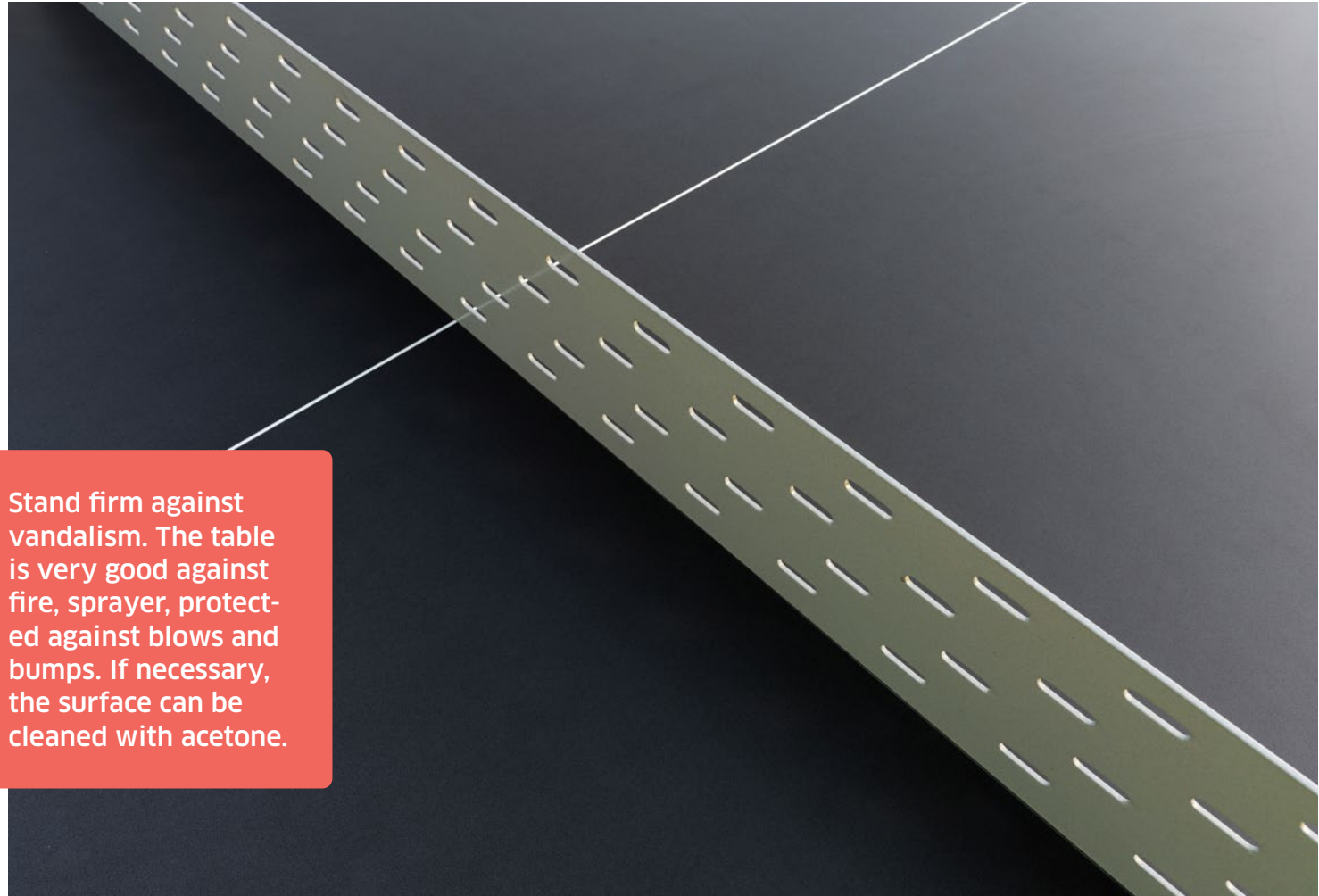


The matt, glare-free melamine resin panel minimizes annoying reflections from the sun.




In contrast to stone or concrete tables, environmental influences such as snow, rain or hail do not harm the resin melamine top.





Stand firm against vandalism. The table is very good against fire, sprayer, protected against blows and bumps. If necessary, the surface can be cleaned with acetone.



Easy to assemble. No particular craftsmanship is required for the assembly. Two people can set up the pingo within an hour.





The stable and robust construction can withstand a load of 1600 kg (3,500 lbs).



The Pingo is perfect for places where children, teenagers, Adults and families come together.

- ✓ Parks and public spaces
- ✓ Sports facilities
- ✓ Schools
- ✓ Companies
- ✓ Swimming pools
- ✓ Leisure facilities
- ✓ Campsites
- ✓ Playgrounds



10 years warranty on the plate

**The Pingo is
available in
different color
combinations**



Configure your Pingo

configurator.tischtennis-shop.ch



Order the Pingo

tabletennistable.tischtennis-shop.ch



No. 1 in table
tennis since 2008



TISCHTENNIS-SHOP.CH